



*“The very spring and root of honesty
and virtue lie in good education.”*

- Plutarch (40 AD – 120 AD) Morals -

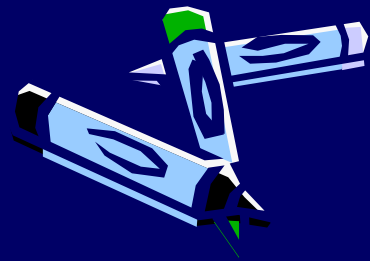
A photograph of Mapleton School, a single-story brick building with a white section. The building has a central entrance with glass doors and a sign above it that reads "112". To the right of the entrance, the words "MAPLETON SCHOOL" are visible on the white wall. A Canadian flag flies on a tall pole to the left of the building. A large green tree is on the right side of the frame. The sky is clear blue. The text "Mapleton School" is overlaid in white on the upper part of the image.

Mapleton School

By: Alex Rohne & Meighan Hygaard - April 2007

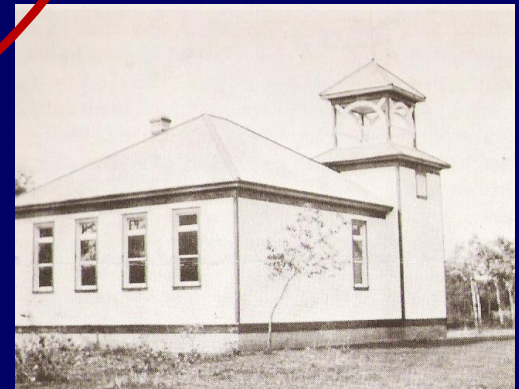
"We strive to create a safe, respectful and harmonious education environment where individuals are encouraged to cooperate, to contribute and to achieve their full potential."

-Mapleton School Mission Statement



Mapleton History

- Founded in 1912 in the area known as Old England - this is in current day Selkirk
- Original school housed grades 1 to 8
- All grades were taught by Miss Edna Johnson
- Miss Edith Thompson was the Trustee for Mapleton School
- In 1921 Mapleton School's yearly costs totaled \$2105.00



Current Mapleton



- Between 1964 and 2000, improvements were made:
 - 1964: The first playground was built at the east end of the school.
 - 1990: A new playground was added at the west end.
 - 2000: A third playground was added at the south end.

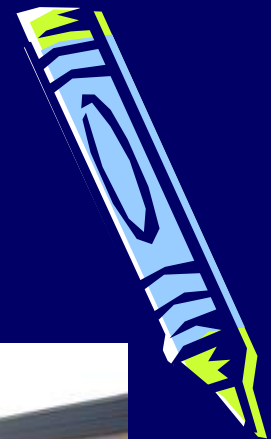


additions
the east end
added
s



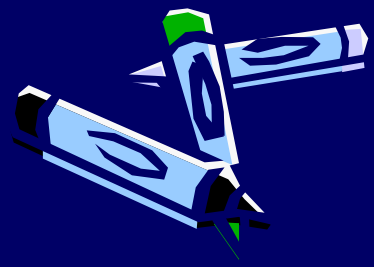
Character Education and Citizenship

- Virtues Program:
 - Respect, Responsibility, Kindness, Empathy, Fairness, Tolerance, and Honesty
- Outreach Programs:
 - Food Hampers
 - Coats for Kids
 - Project Love
 - Tudor House Senior Buddies
 - Humane Society



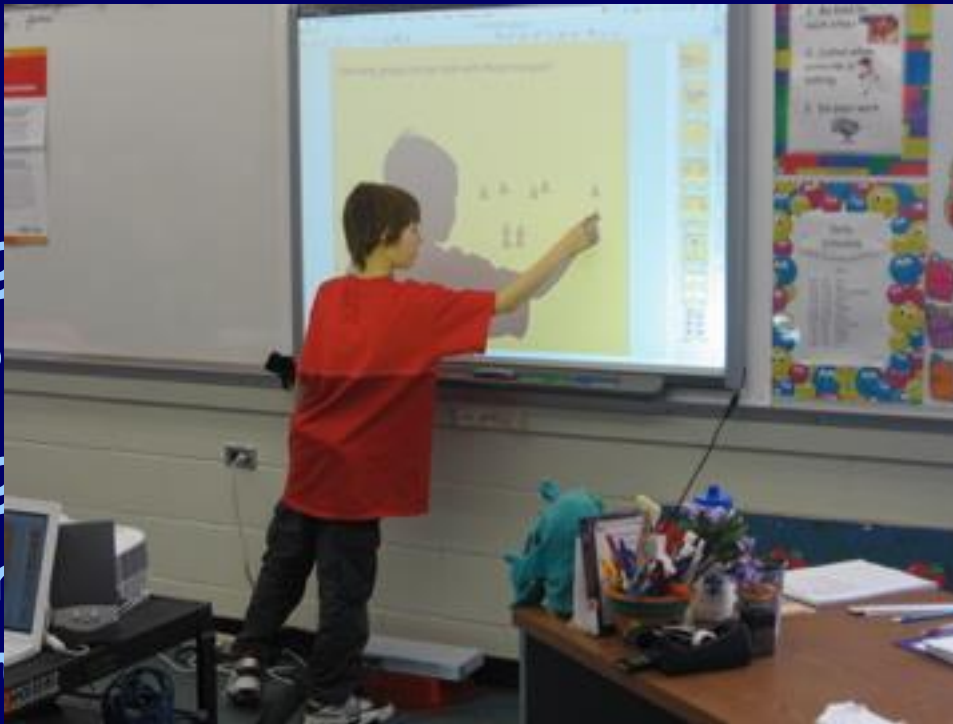
Roots of Empathy

- In its fifth year of offering the program
- Offered from kindergarten to grade two
- Allows children to experience human development
- Enrich the quality of empathy with infants in the community

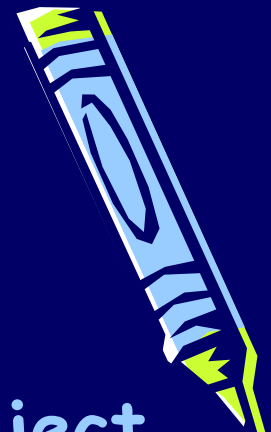


Technology

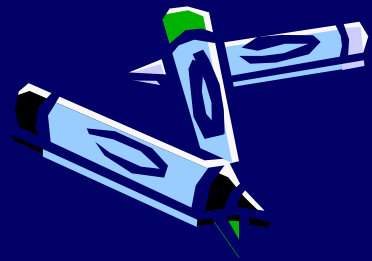
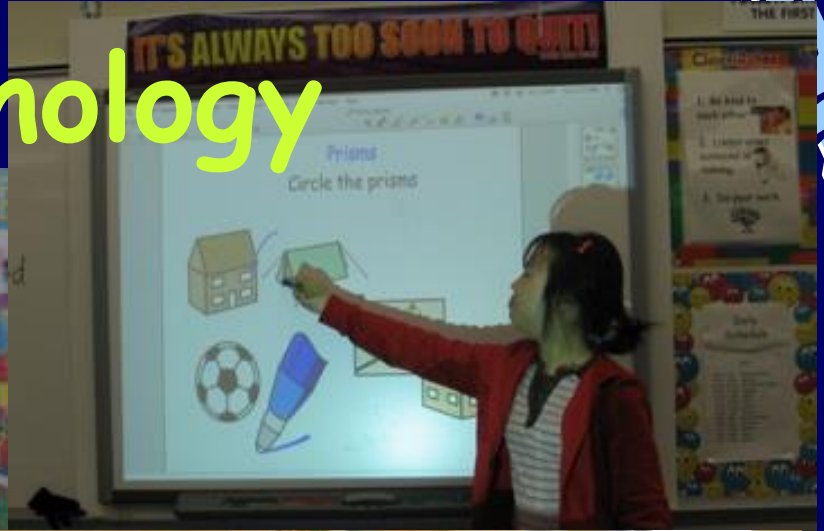
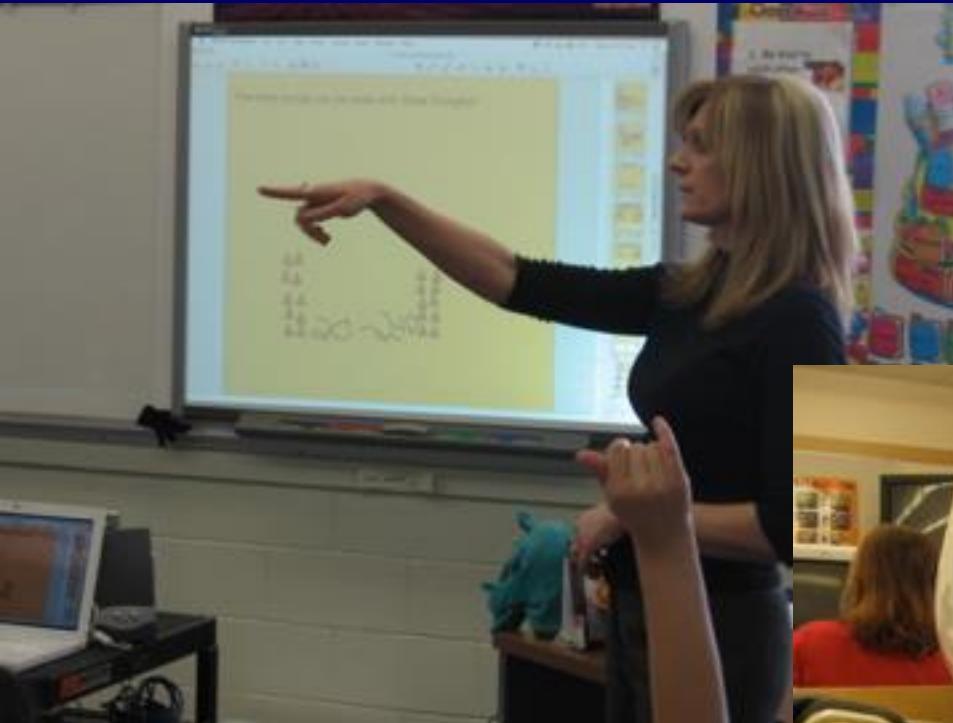
- Pilot
- Te
- Using
- Shar
- Using
- Incorpor
- of th



Project
Learning
Grade 3 to 6
all areas



Technology



Environment

- An environmentally aware school
- Received "Green School" status recognized as an "Earth Level" school
- Completed 2000 environmental projects
- Extensive recycling program
- Works with ARC industries

